

# Instructions For Use



Auto retractable safety hood for safe top cuts



3 Button design for convenient tray cuts



Blade-less tape splitting eliminates cut injuries



## GSC3™ Guarded Safety Cutter

**AMBIDEXTROUS - For Right & Left Handed Users**

### Blade Change

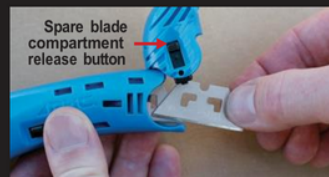


Disengage blade lock. Push blade change buttons forward in tandem on both sides of the safety cutter.



Remove used blade from blade retainer and dispose of safely.

**Use only S Series replacement blades: #SP-017, SPD-017 or PBDSP017B.**



Unlock spare blade compartment by pulling back on the release button. Rotate compartment upward and safely pull spare blade out. Close spare blade compartment.



Insert new blade onto blade retainer by aligning blade notch with alignment tab. Close Blade Lock. Pull blade change button back to the locked position.



UKH-324  
Safety Holster  
Available

